

62

E 1957 J

AT THE CENTER OF THE SOUTH

The **SOUTHERN** AND  
Established in 1872

**NURSERY**  
LANDSCAPE

**CO.**  
INC.

TELEPHONE WO 7-2302

WINCHESTER, TENNESSEE



*Special  
Price List*

*For The Trade Only*

Bulk Rate  
U. S. POSTAGE  
**PAID**  
Permit 85  
Winchester, Tenn.

LIBRARY  
RECEIVED  
★ NOV 21 1957 ★  
U. S. Department of Agriculture

Library, U. S. Department of Agriculture  
Washington, 25, D. C.

Postmaster: Form 3547 Requested

## DECIDUOUS SHRUBS

ALTHEA, Pink, Red, White and	
Variegated	
18-24" .....	@ \$ .20
2- 3' .....	@ .30
3- 4' .....	@ .40
AZALEA, Poukhanensis	
9-12" B&B .....	@ \$1.25
12-15" B&B .....	@ 1.50
15-18" B&B .....	@ 1.75



BERBERIS, Thunbergi Atropurpurea (Red Leaf Barberry)	
12-18" .....	@ \$ .30
18-24" .....	@ .40
24-30" .....	@ .50
B. & B. 50c Extra	

BUDDLEIA—Orchid Butterfly Bush	
18-24" .....	@ \$ .25
2- 3' .....	@ .30
3- 4' .....	@ .40
CRAPE MYRTLE—Pink, Red & White	
18-24" .....	@ \$ .40
2- 3' .....	@ .50
3- 4' .....	@ .60
CYDONIA JAPONICA—Red	
12-18" .....	@ \$ .25
18-24" .....	@ .35
2- 3' .....	@ .50
DEUTZIA, Crenata—Pink	
18-24" .....	@ \$ .15
2- 3' .....	@ .25
3- 4' .....	@ .40
DEUTZIA, Pride of Rochester	
2- 3' .....	@ \$ .25
3- 4' .....	@ .30
4- 5' .....	@ .40
FORSYTHIA, Intermedia and Spectabilis	
2- 3' .....	@ \$ .30
3- 4' .....	@ .40
4- 5' .....	@ .60
FORSYTHIA, Spring Glory	
12-18" .....	@ \$ .20
18-24" .....	@ .25
2- 3' .....	@ .35
JASMINE, Floridum & Nudiflorum,—Heavy	
18-24" .....	@ \$ .50
24-30" .....	@ .60
KOLKWITZIA, (Beauty Bush)	
18-24" .....	@ \$ .30
2- 3' .....	@ .40
LONICERA, Fragrantissima	
18-24" .....	@ \$ .30
2- 3' .....	@ .40
3- 4' .....	@ .50
LONICERA, Tatarica (Pink or White)	
2- 3' .....	@ \$ .30
3- 4' .....	@ .40
PHILADELPHUS, Coronarius	
18-24" .....	@ \$ .25
2- 3' .....	@ .35
3- 4' .....	@ .45

PHILADELPHUS, Virginalis	
18-24" .....	@ \$ .30
2- 3' .....	@ .40
3- 4' .....	@ .60
RHUS COTINUS (Smoke Tree)	
2- 3' .....	@ \$ .50
3- 4' .....	@ .60
4- 5' .....	@ .75
SPIREA, Froebeli	
18-24" .....	@ \$ .30
24-30" .....	@ .40
30-36" .....	@ .50
SPIREA, Prunifolia	
2- 3' .....	@ \$ .30
SPIREA, Thunbergi	
15-18" .....	@ \$ .25
18-24" .....	@ .35
24-30" .....	@ .45
30-36" .....	@ .55
SPIREA, Trichocarpa—(Korean Spirea)	
2- 3' .....	@ .40
3- 4' .....	@ .50
SPIREA, Van Houtte	
12-18" .....	@ \$ .10
18-24" .....	@ .15
2- 3' .....	@ .20
3- 4' .....	@ .30
4- 5' .....	@ .40
SYMPHORICARPOS, Chenaulti (Improved Coralberry)	
18-24" .....	@ \$ .20
2- 3' .....	@ .25
3- 4' .....	@ .35
SYRINGA (Hybrid French Lilacs) Named Varieties	
18-24" .....	@ \$ .60
2- 3' .....	@ .75
Alphonse Lavallee—Dbl. Lavender	
Charles X—Single Red	
Michel Buchner—Dbl. Lavender	
Mme. Casimir Perier—Dbl. White	
Pres. Grevy—Double Blue	
VIBURNUM, Carlesii	
12-15" .....	@ \$1.00
VIBURNUM, Lantana	
12-18" .....	@ \$ .20
18-24" .....	@ .25
WEIGELA, Rosea	
2- 3' .....	@ \$ .30
3- 4' .....	@ .40
4- 5' .....	@ .50



Forsythia Spring Glory & Weigela Vaniceki—Field Grown Liners

**SPECIAL LIST — TRANSPLANTED, BED GROWN & POTTED LINERS**





**TRANSPLANTED LINERS --**

ABELIA, Ed Goucher	@	\$ .15
3- 6 inches		
ABELIA, Grandiflora	@	.10
9-12 inches		
12-15 inches	@	.15
ALMOND Pink Flg.	@	.10
9-12 inches		
12-15 inches	@	.12
15-18 inches	@	.15
AZALEA, Poukhanensis	@	.40
3- 6 inches		
6- 9 inches	@	.50
CORNUS, Florida Plena	@	.50
(Dbl. White Dogwood)		
6-12 inches	@	.50
12-18 inches	@	.75
18-24 inches	@	1.00
CORNUS, Florida Rubra	@	.50
(Pink Flg. Dogwood)		
6-12 inches	@	.50
12-18 inches	@	.75
18-24 inches	@	1.00
CRAPE MYRTLE, Wm. Toovey	@	.12
9-12 inches		
12-15 inches	@	.15
ELAEAGNUS, Reflexa	@	.10
4- 6 inches		
6- 9 inches	@	.12
FORSYTHIA, Spring Glory	@	.06
4- 6 inches		
6-12 inches	@	.10
12-15 inches	@	.15
15-18 inches	@	.20
HYDRANGEA, P. G.	@	.10
6-12 inches		
12-15 inches	@	.12
ILEX, Burfordi	@	.30
6- 9 inches		
9-12 inches	@	.40
ILEX, Cornuta Femina	@	.15
6- 9 inches		
ILEX, Crenata Convexa	@	.30
6- 9 inches		
9-12 inches	@	.40
ILEX, East Palatka	@	.15
6- 9 inches		
9-12 inches	@	.20
ILEX, Rotundifolia	@	.40
6- 9 inches Spread		
9-12 inches Spread	@	.50
JASMINE, Floridum	@	.06
6- 9 inches		
9-12 inches	@	.10
12-15 inches	@	.15
JASMINE, Nudiflorum	@	.06
3- 6 inches		
9-12 inches	@	.10
12-15 inches	@	.15
JUNIPER, Depressa Plumosa	@	.30
3- 6 inches Spread		
6- 9 inches Spread	@	.40
9-12 inches Spread	@	.50
JUNIPER, Excelsa Stricta	@	.15
6- 9 inches		
9-12 inches	@	.25
JUNIPER, Hetzi	@	.20
4- 6 inches Spread		
6- 9 inches Spread	@	.30
9-12 inches Spread	@	.50
12-15 inches Spread	@	.60
JUNIPER, Pfitzer	@	.20
4- 6 inches Spread		
6- 9 inches Spread	@	.30
9-12 inches Spread	@	.40

**OPEN BED CUTTING GROWN LINERS:**

ABELIA, Grandiflora	@	.10
12-15 inches		
15-18 inches	@	.15
ALTHEA, Blue	@	.05
6- 9 inches		
9-12 inches	@	.10



Juniperus Hetzi & Juniperus Pfitzeriana—Field Grown Liners

JUNIPER, Tamariscifolia	@	.15
6- 9 inches		
MAGNOLIA, Grandiflora	@	.12
6- 9 inches		
PHILADELPHUS, Virginalis	@	.10
9-12 inches		
12-15 inches	@	.15
15-18 inches	@	.20
POMEGRANATE, Dwarf	@	.10
6- 9 inches		
9-12 inches	@	.15
SPIREA, Froebeli	@	.10
9-12 inches		
12-15 inches	@	.12
15-18 inches	@	.15
SPIREA, Van Houtte	@	.08
9-12 inches		
12-18 inches	@	.12
18-24 inches	@	.15
VIBURNUM, Opulus Sterile	@	.08
(Common Snowball)		
4- 6 inches		
6- 9 inches	@	.10
9-12 inches	@	.12
VIBURNUM, Rhytidophyllum	@	.15
(Leatherleaf Viburnum)		
6- 9 inches		
9-12 inches	@	.25
12-15 inches	@	.40
WEIGELA, Vaniceki	@	.08
6- 9 inches		
9-12 inches	@	.12
12-15 inches	@	.20

AZALEA, Poukhanensis	@	.20
9-12 inches		
12-15 inches	@	.30
CRAPE MYRTLE, White	@	.08
6- 9 inches		
9-12 inches	@	.10
12-18 inches	@	.15
18-24 inches	@	.25
2- 3 feet	@	.35
CRAPE MYRTLE, Red	@	.08
6- 9 inches		
9-12 inches	@	.10
12-18 inches	@	.15
18-24 inches	@	.25
CYDONIA, Japonica (Red)	@	.10
6-12 inches		
12-18 inches	@	.15
18-24 inches	@	.20
FORSYTHIA, Spring Glory	@	.06
9-12 inches		
12-18 inches	@	.10
18-24 inches	@	.15
HYDRANGEA, P. G.	@	.08
6-12 inches		
12-15 inches	@	.10
15-18 inches	@	.15
ILEX, Burfordi	@	.20
6- 9 inches		
9-12 inches	@	.30
12-18 inches	@	.50
18-24 inches	@	.60
ILEX, Cornuta Femina	@	.10
6- 9 inches		
9-12 inches	@	.20
12-15 inches	@	.25
15-18 inches	@	.35
18-24 inches	@	.50
ILEX, Crenata Convexa	@	.25
9-12 inches		
12-15 inches	@	.40
ILEX, East Palatka	@	.50
18-24 inches		
2- 3 feet	@	.60
3- 4 feet	@	.75
4- 5 feet	@	1.00
ILEX, Opaca, Femina	@	.20
4- 6 inches		
6- 9 inches	@	.30
9-12 inches	@	.40
ILEX, Opaca, Male	@	.15
4- 6 inches		
6- 9 inches	@	.20
9-12 inches	@	.35
ILEX, Rotundifolia	@	.10
4- 6 inches		
6- 9 inches	@	.12
9-12 inches	@	.15
12-15 inches	@	.20

**OPEN BED -- SEEDLING GROWN LINERS**

ILEX, Crenata Convexa	@	.15
6- 9 inches		
9-12 inches	@	.25
12-15 inches	@	.40
MAGNOLIA, Grandiflora (Seedlings)	@	.08
4- 6 inches		
6- 9 inches	@	.10
JUNIPER, Horizontalis—Glauca	@	.10
6- 9 inches		
9-12 inches	@	.15
12-15 inches	@	.25
KOLKOWITZIA (Beauty Bush)	@	.10
18-24 inches		
2- 3 feet	@	.20
3- 4 feet	@	.30



Juniperus Depressa Plumosa—Field Grown Liners

NANDINA DOMESTICA	@	.08
4- 6 inches		
6- 8 inches	@	.10
PYRACANTHA, Graberi (Red Berry)	@	.50
12-18 inches		
18-24 inches	@	.60
SPIREA, Froebeli	@	.08
6- 9 inches		
VIBURNUM, Burkwoodi	@	.15
4- 6 inches		
6- 9 inches	@	.20
VIBURNUM, Carlesi	@	.15
6- 9 inches		
9-12 inches	@	.25
12-15 inches	@	.40
VIBURNUM, Lantana	@	.10
9-12 inches		
12-15 inches	@	.15
15-18 inches	@	.20
VIBURNUM, Opulus Sterile	@	.08
(Common Snowball)		
6- 9 inches		
VIBURNUM, Rhytidophyllum	@	.15
(Leatherleaf Viburnum)		
6- 9 inches		
9-12 inches	@	.25
12-18 inches	@	.40
VIBURNUM, Tomentosum Plicatum	@	.10
(Japanese Snowball)		
6- 9 inches		
9-12 inches	@	.20
12-15 inches	@	.30

**POTTED LINERS:**

ABELIA, Grandiflora	@	.10
2 inch Pots		
CRAPE MYRTLE, Red & White	@	.15
2 1/4 inch Pots		
ELAEAGNUS, Fruitlandi	@	.15
2 1/2 inch Pots		
4 inch Pots	@	.30
FORSYTHIA, Spring Glory	@	.20
3 inch Bands		
GARDENIA	@	.15
2 1/2 inch Pots		
HYDRANGEA, French	@	.25
2 1/2 inch Pots		
ILEX, Cornuta Femina	@	.30
2 1/4 inch Pots		
3 inch Bands		
8 inch Pots	@	1.50
ILEX, Crenata Convexa	@	.20
2 inch Pots		
ILEX, East Palatka	@	.40
4 inch Pots		
ILEX, Opaca, Femina	@	.50
3 inch Pots		
4 inch Pots	@	.60
5 inch Pots	@	.65
ILEX, Rotundifolia	@	.20
2 inch Pots		
2 1/4 inch Pots	@	.25
IVY, English	@	.15
2 1/4 inch Pots		

IVY, Self-Branching	@	.15
2 inch Pots		
JASMINE, Nudiflorum	@	.10
2 inch Pots		
JUNIPER, Depressa Plumosa	@	.20
2 inch Pots		
2 1/4 inch Pots	@	.30
JUNIPER, Hetzi	@	.20
2 1/4 inch Pots		
JUNIPER, Pfitzer	@	.15
2 inch Pots		
JUNIPER, Tamariscifolia	@	.20
2 inch Pots		
LAUREL, Cherry	@	.25
3 inch Pots		
LUCIDUM, Ligustrum	@	.15
2 1/4 inch Pots		
2 1/2 inch Pots	@	.20
MAGNOLIA, Grandiflora	@	.20
2 1/2 inch Pots		
4 inch Pots	@	.50
MAHONIA, Bealei	@	.15
2 inch Pots		
PYRACANTHA, Graberi (Red Berry)	@	.15
2 inch Pots		
8 inch Pots	@	2.50
PYRACANTHA, Lalandi (Orange Berry)	@	.15
2 inch Pots		
8 inch Pots	@	2.50
VIBURNUM, Opulus Sterile	@	.10
3 inch Bands		
VIBURNUM, Rhytidophyllum	@	.25
2 1/4 inch Pots		
WEIGELA, Eva Rathke	@	.12
2 inch Pots		
WEIGELA, Vaniceki	@	.25
3 inch Bands		



Ilex Rotundifolia—Field Grown Liners



Jasmine Floridum—Field Grown Liners

# FRUIT TREES

## APPLE—2 Yr. Branched

5	to 6 ft., 1 in. Cal.	@ \$	.85
4½	to 6 ft., 11/16 in. Cal.	@	.70
4	to 5 ft., 9/16 in. Cal.	@	.60
3	to 4 ft., 7/16 in. Cal.	@	.50

### Varieties:

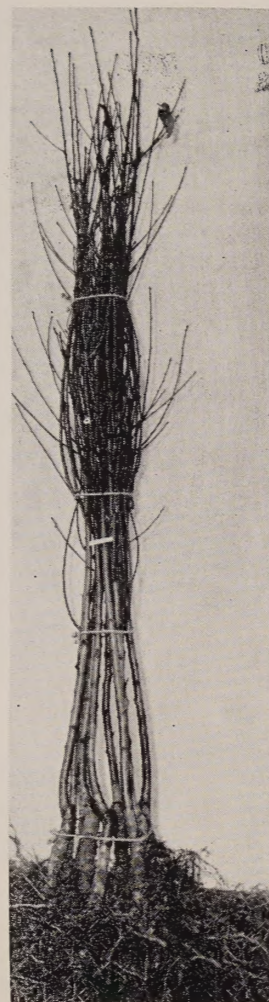
Anoka	Red Rome Beauty
Delicious, Dbl. Red	Rome Beauty
Delicious, Golden	Stayman
Early Harvest	Turley
Grimes Golden	Wilson Red June
Hyslop Crab	Winesap
Jonathan	Yates
Livland Raspberry	Yellow Horse
Lodi	Yellow Transparent
McIntosh	York Imperial

## PEACH—1 Yr.

5	to 6 ft., 1 in. Cal.	@ \$	.75
4½	to 6 ft., 11/16 in. Cal.	@	.60
4	to 5 ft., 9/16 in. Cal.	@	.50
3	to 4 ft., 7/16 in. Cal.	@	.40
2	to 3 ft., 5/16 in. Cal.	@	.30

### Varieties:

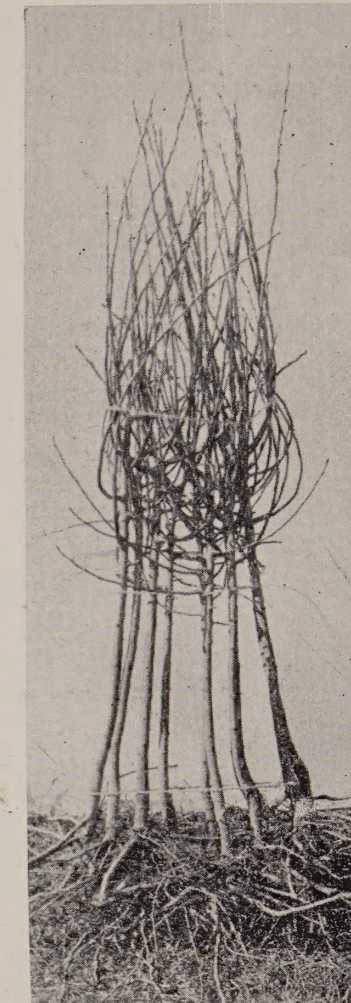
Ambergem	Indian Cling
Belle of Georgia	Kalhaven
Champion	Keystone
Chinese Cling	Mayflower
Dixigem	Ranger
Dixired	Redglobe
Elberta	Red Haven
Elberta, Sullivan's Early	Rich Haven
Fair Beauty	Rio-Oso-Gem
Fair Haven	Rochester
Golden Jubilee	Southland
Hale Haven	Sun Haven
Hiland	Sunhigh



Peach



MALUS HOPA (Hopa Flg. Crabs)—2 Year



Malus Dolgo (Dolgo Flg. Crab)

# DOGWOOD

CORNUS FLORIDA RUBRA (Red Flowering Dogwood)

CORNUS FLORIDA ALBA PLENA (Dbl. White Flowering Dogwood)

CORNUS FLORIDA (Single White Flowering Dogwood)

The roots of the above plants can be packed with sphagnum moss covered with Polyethylene to seal in moisture and seal out the air. Burlap is placed over Polyethylene for protection. A 5 to 6 ft. Dogwood balled in earth should weigh approximately 100 lbs. or more while the moss, polyethylene and burlap only weigh approximately 20 lbs.

## CORNUS FLORIDA PLENA (Dbl. White Flowering Dogwood)—

With Bloom Buds	
12-18" not B&B	@ \$1.00
18-24" not B&B	@ 1.25
2- 3' not B&B	@ 1.50
3- 4' not B&B	@ 2.50

## CORNUS FLORIDA RUBRA (Pink Dogwood)

12-18" not B&B	@ \$ .75
18-24" not B&B	@ 1.25
24-30" not B&B	@ 1.50
30-36" not B&B	@ 1.75

## CORNUS FLORIDA RUBRA (Pink Dogwood) (Following Grades have Bloom Buds)

3- 4' not B&B	@ \$2.50
4- 5' not B&B	@ 4.00
3- 4' B&B	@ 3.00
4- 5' B&B	@ 4.50
5- 6' B&B	@ 6.00

Balled with Sphagnum Moss, Same as Balled with Dirt.

## APRICOT—1 Yr.

5	to 6 ft., 1 in. Cal.	@ \$1.00
4½	to 6 ft., 11/16 in. Cal.	@ .75
4	to 5 ft., 9/16 in. Cal.	@ .60
3	to 4 ft., 7/16 in. Cal.	@ .50
2	to 3 ft., 5/16 in. Cal.	@ .40

### Varieties:

Early Golden Moorpark	Northern Superb
-----------------------	-----------------

## CHERRY, SOUR—1 Yr.

4	to 6 ft., 11/16 in. Cal.	@ \$1.00
3½	to 5 ft., 9/16 in. Cal.	@ .80
3	to 4 ft., 7/16 in. Cal.	@ .60
2	to 3 ft., 5/16 in. Cal.	@ .50

### Varieties:

Early Richmond	Montmorency
----------------	-------------



Our Calleryana Pear Orchard  
These trees supply our blight resistant root stocks for propagating some of our Pear Trees.

## PEAR—1 & 2 Yr. (Whips and Branched Trees)

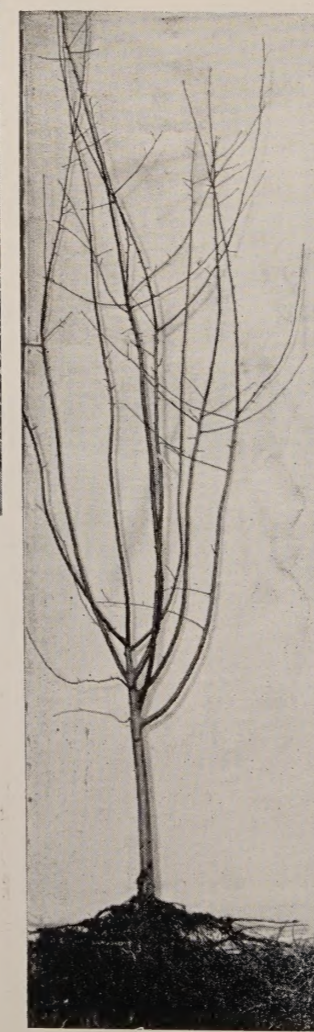
5	to 6 ft., 1 in. Cal.	@ \$1.25
4½	to 6 ft., 11/16 in. Cal.	@ .90
4	to 5 ft., 9/16 in. Cal.	@ .75
3	to 4 ft., 7/16 in. Cal.	@ .60
5	to 6 ft., Whips	@ .70
4	to 5 ft., Whips	@ .60
3	to 4 ft., Whips	@ .50

### Varieties:

Bartlett	Douglas (Whips Only)
Dixie (Whips Only)	Orient
Kieffer	

## 5-N-1 APPLE (5 Varieties on 1 Tree)

4	to 5 ft., 9/16 in. Cal.	@ \$1.60
3	to 4 ft., 7/16 in. Cal.	@ 1.25



Malus Arrow (Arrow Flg. Crab)

# ORNAMENTAL TREES

## FLOWERING CRABS -- GROUP No. 1: (Branched)

3-4 ft., not B&B	@ \$ .60
4-5 ft., not B&B	@ .80
5-6 ft., not B&B	@ 1.25
6-8 ft., not B&B	@ 2.50

### Varieties:

ATROSANGUINEA (Carmine Buds with Flowers Fading to Dull Pink), DOLGO (White Flowers), ELEYI (Purplish-red Flowers), FLORIBUNDA (Deep Pink Blossoms Fade to White), FLORIBUNDA PURPUREA (Purplish-red Flowers), GENEVA (Purplish-red Flowers), GLORIOSA (Purplish-red Flowers), HOPA (Carmine Buds and Flowers Fade to Dull Pink), RED SILVER (Purplish-red Flowers), SCHEIDECKERI (Double, Pale Pink Flowers).

## FLOWERING CRABS -- GROUP No. 2: (Branched)

3-4 ft., not B&B	@ \$1.00
4-5 ft., not B&B	@ 1.25
5-6 ft., not B&B	@ 1.75

### Varieties:

ALMEY (Carmine Buds and Flowers Fade to Pink), ARROW (Purplish-red Flowers), BACCATA (Fragrant, White Flowers), MAKAMIK (China-Rose Flowers.)

## VINE

EUONYMUS, Coloratus

12-15" not B&B	@ 30c
15-18" not B&B	@ 40c
18-24" not B&B	@ 50c

## HEDGE

LIGUSTRUM, Sinensis (Amoor River South Privet)

2- 3'	@ \$ .10
3- 4'	@ .15
4- 5'	@ .25

**SOUTHERN NURSERY AND LANDSCAPE COMPANY**  
Winchester, Tennessee

**CORNUS FLORIDA (White Flowering Dogwood)**

- 18-24" not B&B ..... @ \$ .50
- 2- 3' not B&B ..... @ .75
- 3- 4' not B&B ..... @ 1.25

**FLOWERING PEACH—Dbl. Pink, Dbl. Red, Dbl. White**

- 4- 5' BR ..... @ \$ .75
- 5- 6' BR ..... @ 1.00

**MAGNOLIA GRANDIFLORA**

- 2- 3' B&B ..... @ \$2.50
- 3- 4' B&B ..... @ 3.00
- 4- 5' B&B ..... @ 4.00

**PRUNUS TRILOBA (Flowering Plum)**

- 2- 3' not B&B ..... @ \$ .50
- 3- 4' not B&B ..... @ .60
- 4- 5' not B&B ..... @ .80

**PURPLE LEAF PLUM—Prunus Newport, Pissardi, and Thundercloud**

- 3- 4' BR ..... @ \$ .60
- 4- 5' BR ..... @ .80
- 5- 6' BR ..... @ 1.00

**SALIX BABYLONICA (Weeping Willow)**

- 3- 4' not B&B ..... @ \$ .50
- 4- 5' not B&B ..... @ .60
- 5- 6' not B&B ..... @ .80
- 6- 8' not B&B ..... @ 1.00

**WISTERIA, TREE FORM—Purple**

- 2- 3' BR ..... @ \$2.25
- 3- 4' BR ..... @ 3.00

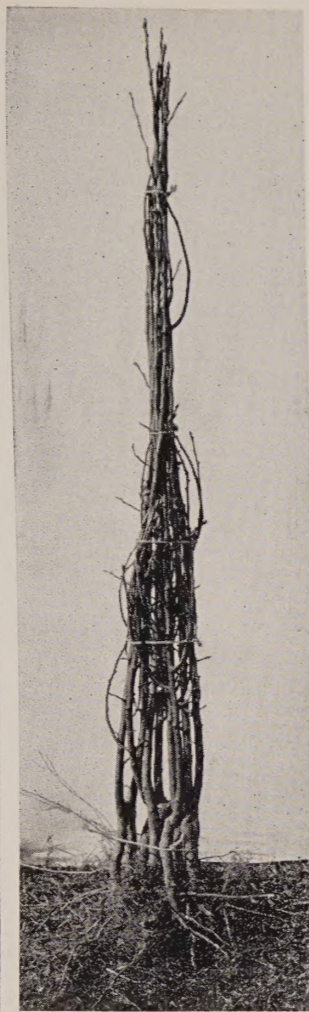
(For B&B plants, add 50c per tree)



Salix Babylonica (Weeping Willow)



Plum



Orient Pear



Kieffer Pear

**CHERRY, SWEET—1 Yr. Whips**

- 5 to 6 ft. Whips ..... @ \$1.25
- 4 to 5 ft. Whips ..... @ 1.00
- 3 to 4 ft. Whips ..... @ .70

Varieties:  
Schmidt Windsor

**DAMSON, PLUM, PRUNE, NECTARINE—1 Yr.**

- 4 1/2 to 6 ft., 11/16 in. Cal. .... @ \$ .80
- 4 to 5 ft., 9/16 in. Cal. .... @ .70
- 3 to 4 ft., 7/16 in. Cal. .... @ .60
- 2 to 3 ft., 5/16 in. Cal. .... @ .40

Varieties:  
Abundance Shropshire Damson  
Burbank Stanley Prune  
Oka  
Opata  
Sapa Hunter Nectarine

**FIGS—1 Yr.**

- 2 to 3 ft. .... @ \$ .50
- 18 to 24 in. .... @ .40

Varieties:  
Brown Turkey Everbearing  
Celeste

**GRAPES—1 Yr., No. 1** ..... @ \$ .20

Varieties:  
Catawba (Red) Fredonia (Blue)  
Concord (Blue) Niagara (White)

**CHESTNUTS, CHINESE and JAPANESE**

- 6 to 7 ft. .... @ \$3.00
- 5 to 6 ft. .... @ 2.00
- 4 to 5 ft. .... @ 1.00
- 3 to 4 ft. .... @ .60
- 2 to 3 ft. .... @ .50

**PECAN TREES—Florida Giant and Stuart**

- 4 to 5 ft. .... @ \$2.25
- 3 to 4 ft. .... @ 1.75

**BLACK WALNUT, 2 to 3 ft.** ..... @ \$1.25

**BROADLEAF EVERGREENS**

**ABELIA, Edward Goucher**

- 18-24" BR ..... @ \$ .60
- 18-24" B&B ..... @ 1.00
- 24-30" BR ..... @ .75
- 24-30" B&B ..... @ 1.25
- 30-36" B&B ..... @ 1.50



Abelia Grandiflora

**ABELIA, Grandiflora**

- 12-18" BR ..... @ \$ .30
- 18-24" BR ..... @ .50
- 2- 3' BR ..... @ .75
- 2- 3' B&B ..... @ 1.25
- 3- 4' B&B ..... @ 1.50
- 4- 5' B&B ..... @ 2.00

**ELAEAGNUS, Fruitlandi**

- 2- 3' B&B ..... @ 2.25
- 3- 4' B&B ..... @ 2.75
- 4- 5' B&B ..... @ 3.00

**ELAEAGNUS, Reflexa**

- 18-24" B&B ..... @ \$1.75
- 2- 3' B&B ..... @ 2.00
- 3- 4' B&B ..... @ 2.50

**EUONYMUS, Carrierei**

- 12-18" B&B ..... @ \$1.00
- 18-24" B&B ..... @ 1.50

**EUONYMUS, Japonica**

- 18-24" B&B ..... @ \$1.25
- 2- 3' B&B ..... @ 1.75

**EUONYMUS, Patens**

- 12-18" B&B ..... @ \$1.25
- 18-24" B&B ..... @ 1.50
- 2- 3' B&B ..... @ 1.75

**ILEX, Cornuta**

- 12-18" B&B ..... @ \$2.00
- 18-24" B&B ..... @ 2.50
- 24-30" B&B ..... @ 3.00

**ILEX, East Palatka**

- 2- 3' B&B ..... @ \$2.50
- 3- 4' B&B ..... @ 3.00



Ilex Rotundifolia

**ILEX, Rotundifolia**

- 12-18" B&B ..... @ \$1.75
- 18-24" B&B ..... @ 2.50

**LIGUSTRUM, Lucidum**

- 2- 3' B&B ..... @ \$1.50
- 3- 4' B&B ..... @ 2.00



Nandina Domestica

**NANDINA, Domestica**

- 18-24" B&B ..... @ \$1.25
- 24-30" B&B ..... @ 1.50
- 30-36" B&B ..... @ 2.00
- 3- 4' B&B ..... @ 2.50

**VIBURNUM, Rhytidophyllum**

- 24-30" B&B ..... @ \$2.50
- 30-36" B&B ..... @ 3.00

**CONIFEROUS EVERGREENS**



Juniperus Hetzi

**CEDRUS, Deodara**

- 3- 4' B&B ..... @ 3.50
- 4- 5' B&B ..... @ 4.00
- 5- 6' B&B ..... @ 5.50

**JUNIPER, Hibernica Fastigiata**

- 2- 3' B&B ..... @ \$1.50
- 3- 4' B&B ..... @ 1.75
- 4- 5' B&B ..... @ 2.25
- 5- 6' B&B ..... @ 2.75

**HEMLOCK, Spruce**

- 2- 3' B&B ..... @ \$3.00
- 3- 4' B&B ..... @ 4.00
- 4- 5' B&B ..... @ 5.00

**JUNIPER, Pfitzer**

- 15-18" B&B ..... @ \$1.75
- 18-24" B&B ..... @ 2.25
- 24-30" B&B ..... @ 3.00
- 30-36" B&B ..... @ 3.50

**JUNIPER, Hetzi**

- 24-30" B&B ..... @ \$2.50
- 30-36" B&B ..... @ 3.00
- 3- 4' B&B ..... @ 3.50

**JUNIPER, Savin**

- 18-24" B&B ..... @ 2.00
- 24-30" B&B ..... @ 2.25



Juniperus Pfitzeriana

**SOUTHERN NURSERY AND LANDSCAPE COMPANY**  
Winchester, Tennessee



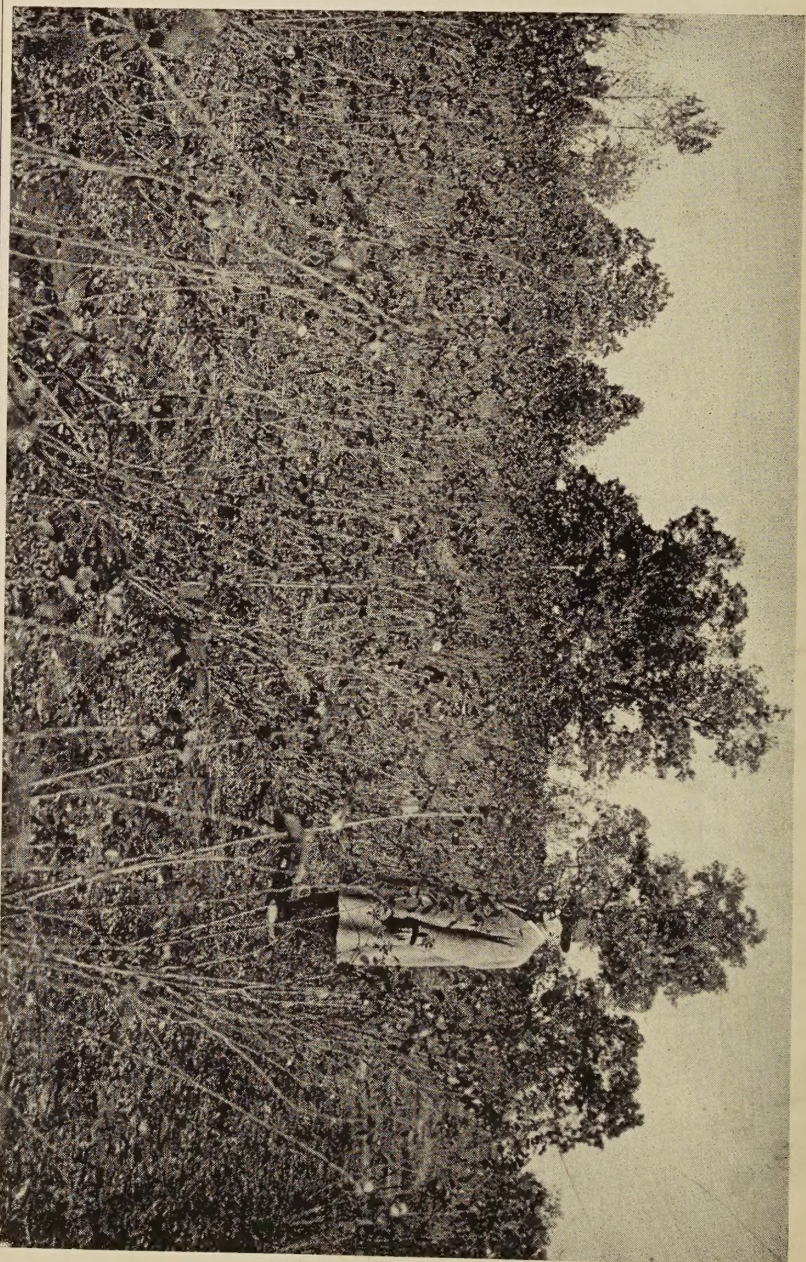
# ROSES

No. 1 . . . . . @ \$ .50

No. 1½ . . . . . @ .40

Varieties:

- Blaze Climber
- Paul Scarlet Climber
- Climbing Etoile de Hollande
- Climbing Talisman
- Mrs. Charles Bell
- Pink Radiance
- Red Radiance



**TERMS:** Cash with order, or satisfactory reference from parties who have not established credit with us. To firms whose credit has been established, terms are net 30 days from date of invoice. C. O. D. orders must be accompanied by at least 25% of the total order. Stock travels at Purchaser's risk.

**PACKING:** Are f.o.b. Winchester, Tennessee, and subject to change without notice.

**PACKING:** Orders will be baled for shipment free of charge; however, there will be a nominal charge should boxing be necessary or requested. **TRUCKS AND/OR RAILROAD CARS WILL BE PACKED FREE OF CHARGE.**

**SHIPPING:** Please state method of shipment desired, whether by rail freight, truck freight, or express—and the route please.

**CLAIMS:** All claims for any cause must be made promptly upon receipt of order.

**NON-WARRANTY:** We give no warranty, expressed or implied, as to the variety of productivity of any nursery stock, seeds, or bulbs we sell. Liability in all instances is limited to the purchase price. No liability is assumed by the seller for delay or failure to deliver caused by wars, strikes, fires, floods, droughts, embargos or any other contingencies beyond our control. If purchaser does not accept goods on these terms, they are to be returned.

**SOUTHERN NURSERY AND LANDSCAPE COMPANY**

**Winchester, Tennessee**

Donnell, The Printer, Winchester, Tenn